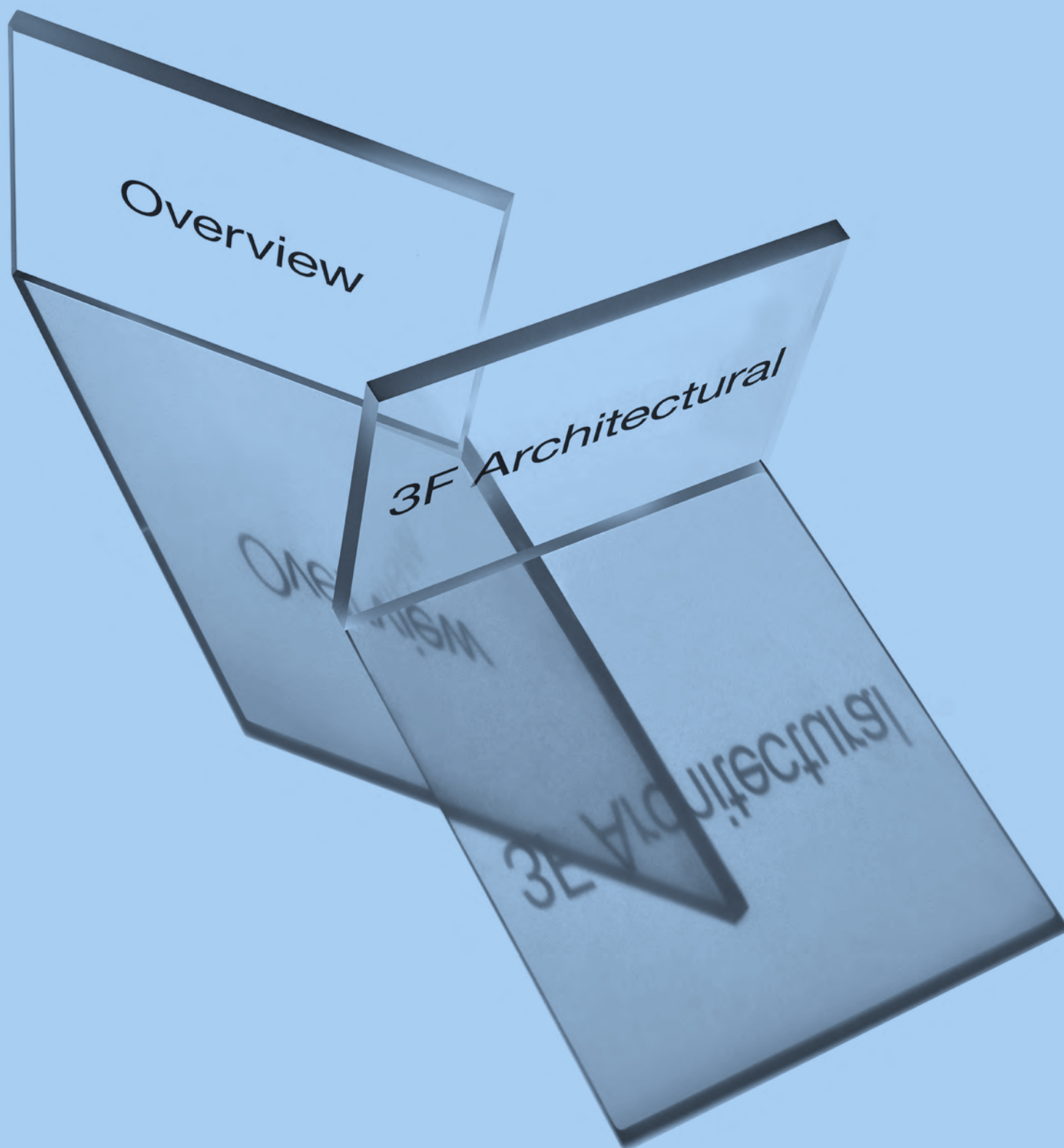

3F Architectural

Light for
active spaces






3F Architectural

Light for
active spaces

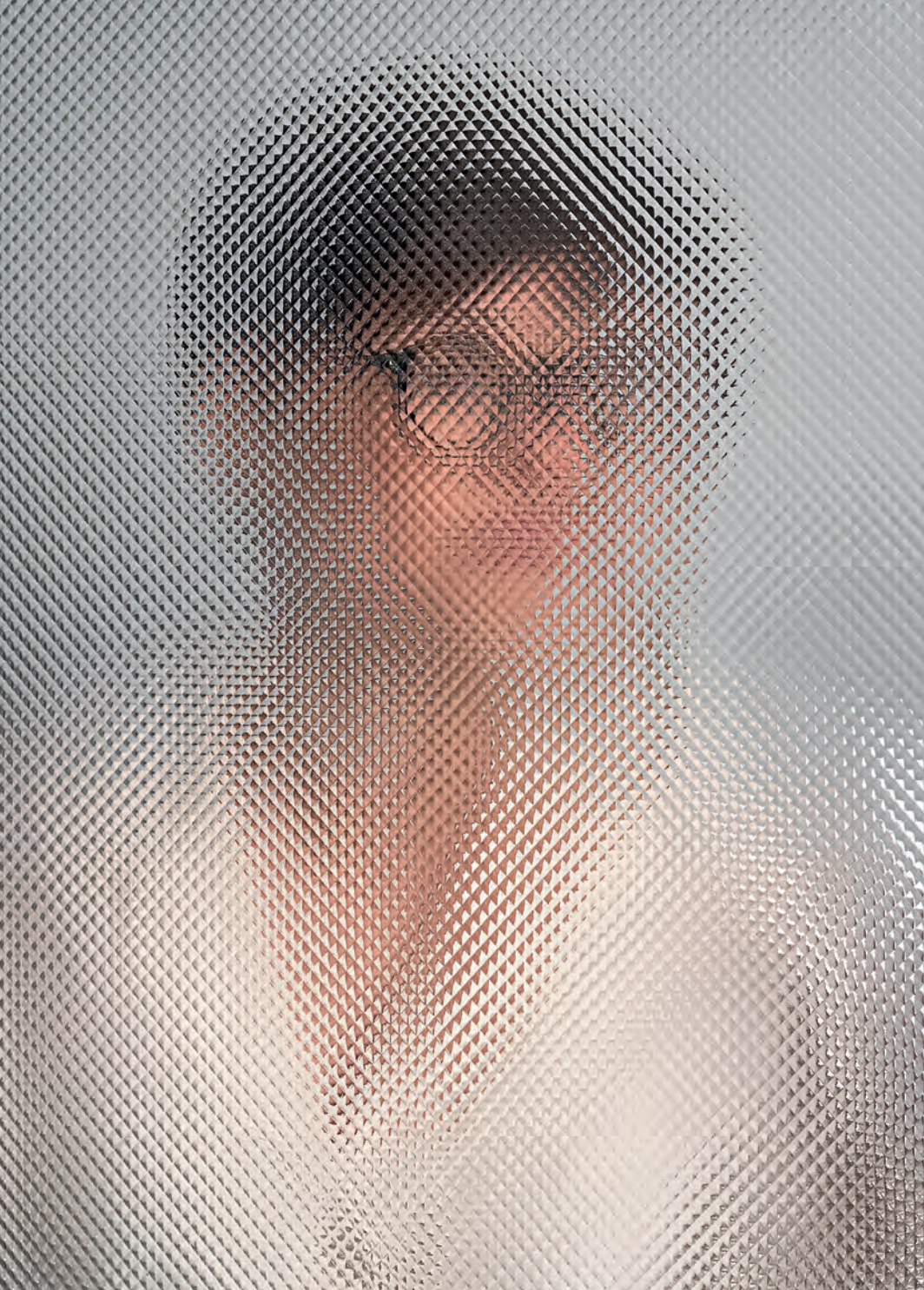
Overview



The working world is continuously evolving. Codes renew and behaviours change, along with how environments are experienced: the new 3F Architectural line reflects these changes through the super efficient and flexible lighting systems.

The concept collects 3F Filippi's expertise and its well-known skill in technical lighting design and production, translating it into across-the-board and versatile products, able to adapt to different organisations and evolve over time to meet the needs of increasingly flexible offices and workplaces.

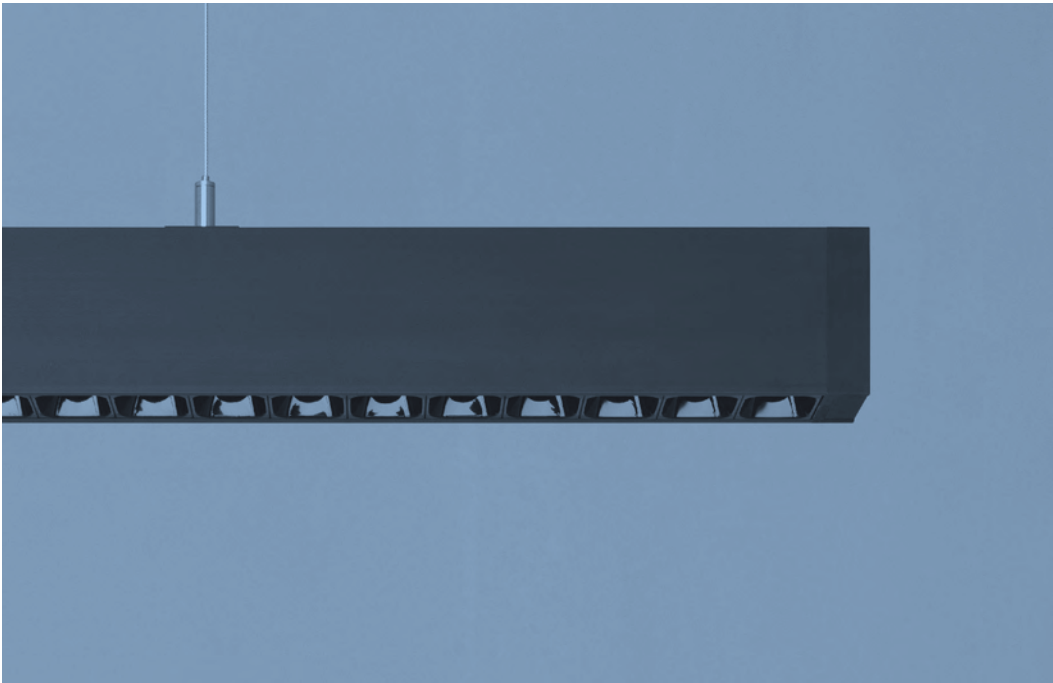
The lamps showcase different formal languages but that are all consistent in their essential and contemporary approach, combining careful planning, design content, and technical functionalities, while always focusing on people. The products are suited to many different configurations and applications, fitting into the architectural spaces with a subtle presence or highlighting shapes.



3F HD

Design
Park Associati

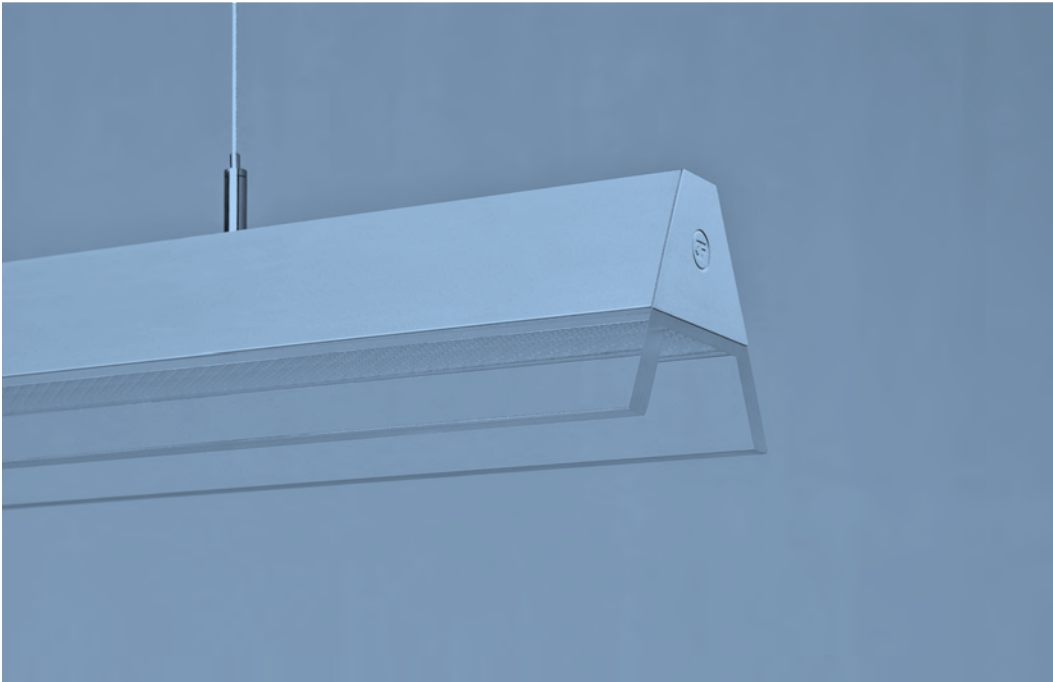
P 6



3F Mirella

Design
Andrea Ciotti

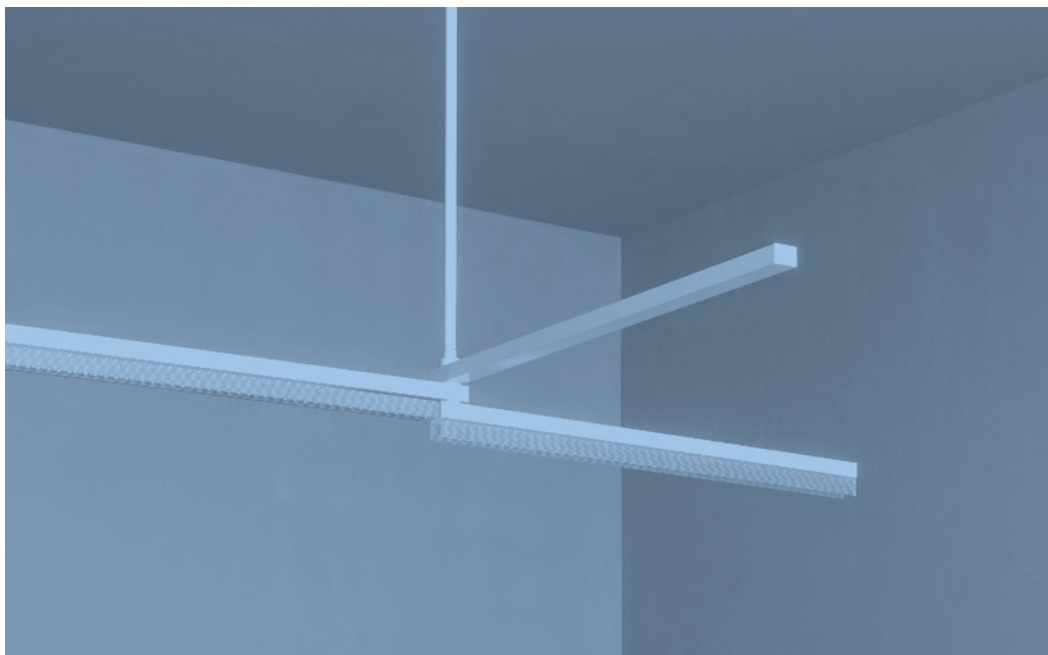
P 10



3F Trittico

Design
Alfonso Femia /
AF*DESIGN

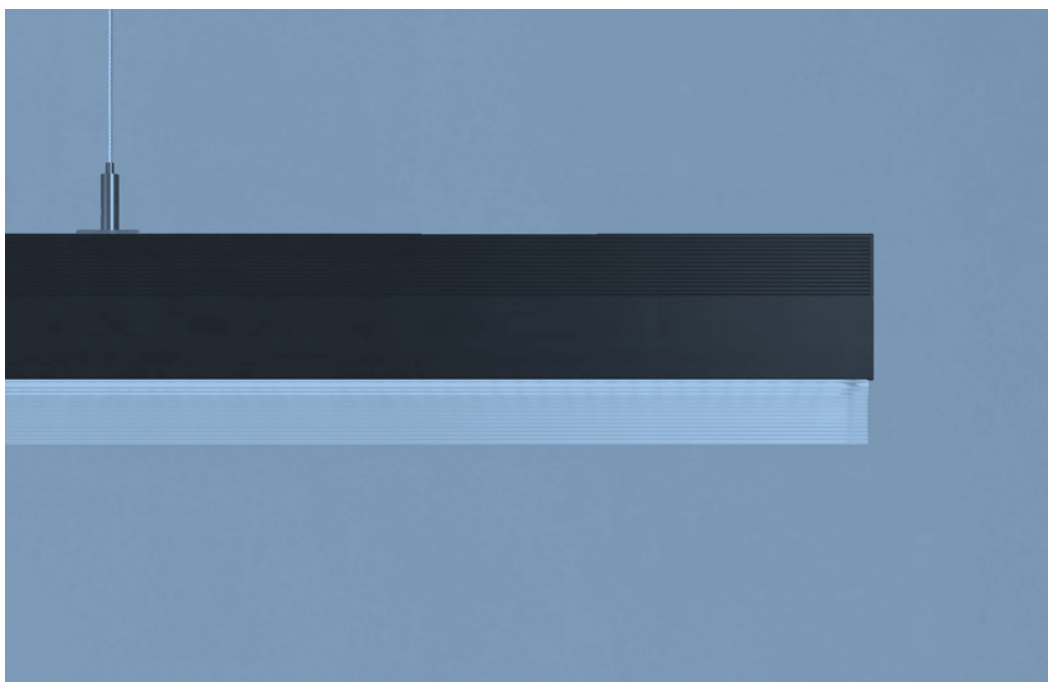
P 16



3F Solo

Design
Alfonso Femia /
AF*DESIGN

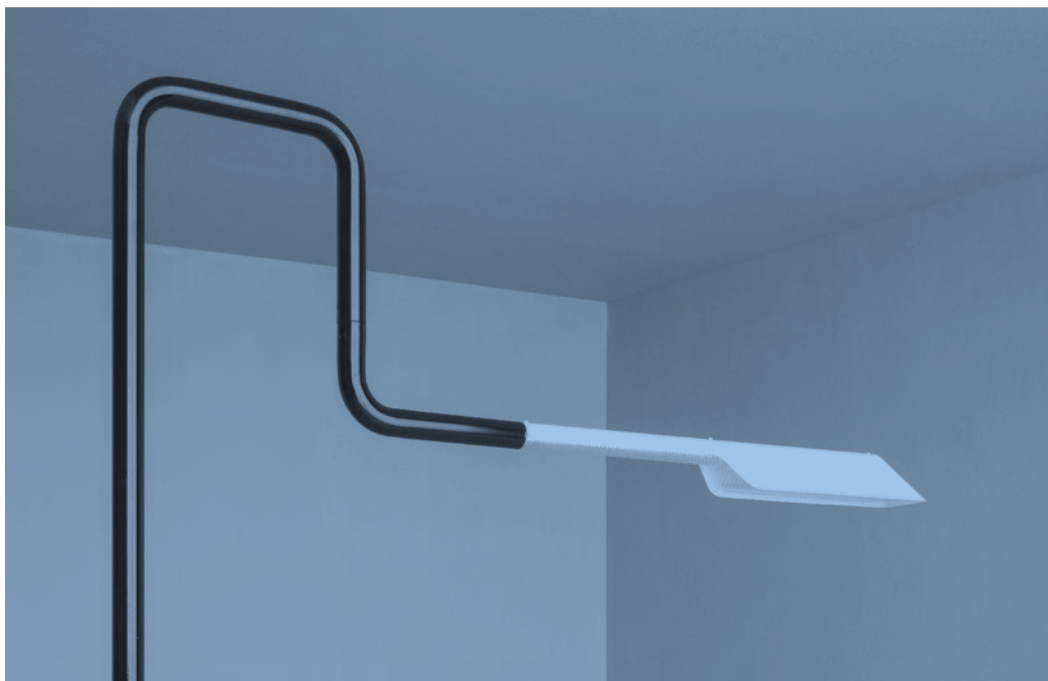
P 20



3F Filoluce

Design
GEZA Architettura

P 24





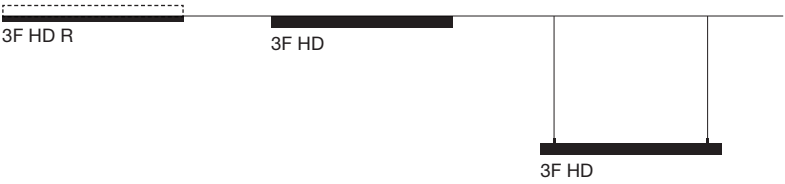
The linear aluminium profile with H-shaped section delineates the luminaire with its luminous head. This means the product is perceived everywhere in the environment. Available in the ceiling, suspension, and built-in versions in two widths and different lengths; used in a continuous row the system does not need joints, which are already included, significantly reducing installation times and ensuring maximum uniformity

of the light diffusion. HD offers direct or direct/indirect light emissions and is offered in 5 variants with different photometric distributions. Thanks to the accurate study of the optics, it is highly performing and makes it possible to install the devices farther apart, while keeping the flow uniform. There is also a LEED compliant model, equipped with OC optics, an innovative technical solution.





Type of installation



Technical drawings

3F HD



3F HD R



Light distribution

- Direct
- Direct/Indirect

Module

- Single
- Channel

Finish colours

- Matte black
- Matte white
- Aluminium

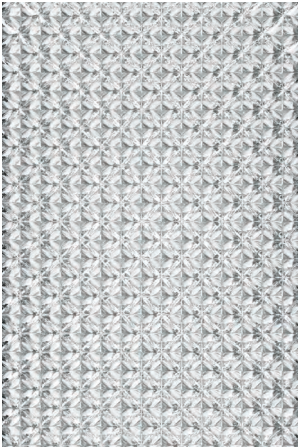
Screen types



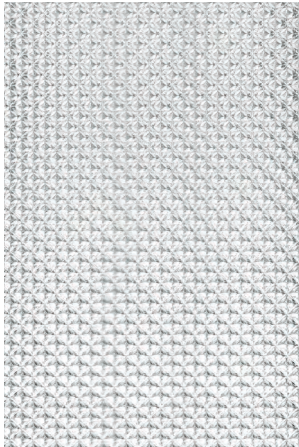
OCB
Optic Control Black



OCW
Optic Control White



GSP
Glare Screen
Prismatic



FDP
Flat Diffuser
Microprismatic



FDO
Flat Diffuser Opal



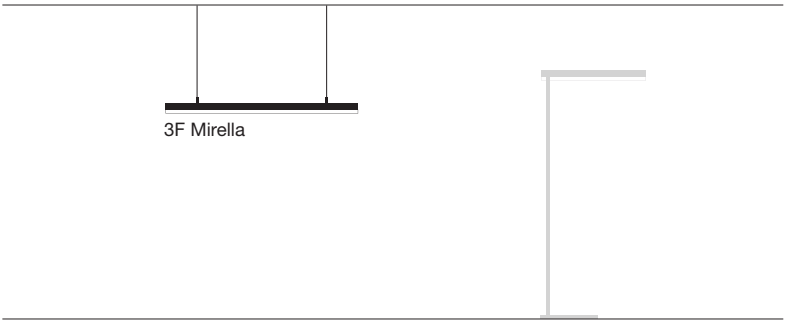
The luminaire is made up of an aluminium body housing the LED technology and a shaped methacrylate body that guides the luminous flow which can be direct or indirect. The perfect integration of the two elements ensures that the visual perception of the light source within the space changes during the daytime. The play of lenses also guarantees a high amount of light, which

is usually offered by much larger products, without the risk of blinding, the light shielding is, in fact, total. The simple line, created from the extrusion of an archetypal shape, allows the lamp to fit discreetly into all environments, “dematerializing” when turned off. Available in various finishes in a suspension and a floor version, the external lens can be made of PMMA that is transparent or satin in the Soft model.

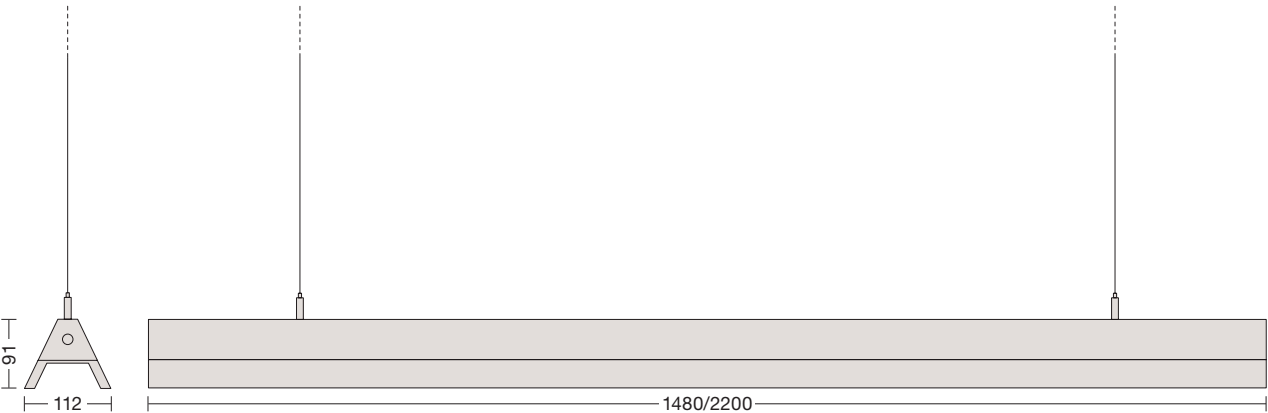




Type of installation



Technical drawings

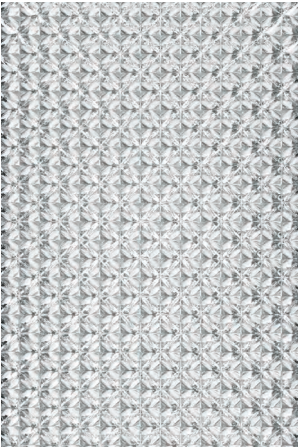


- Light distribution
- Direct
 - Direct/Indirect

- Models
- 3F Mirella
 - 3F Mirella Soft

- Finish colours
- Matte black
 - Matte white
 - Aluminium

Screen types



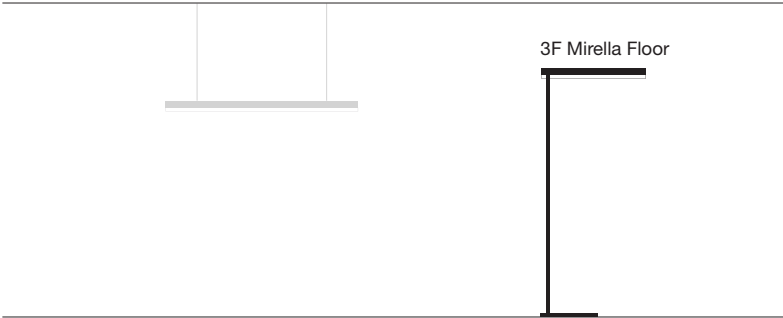
SP
Flat Prismatic



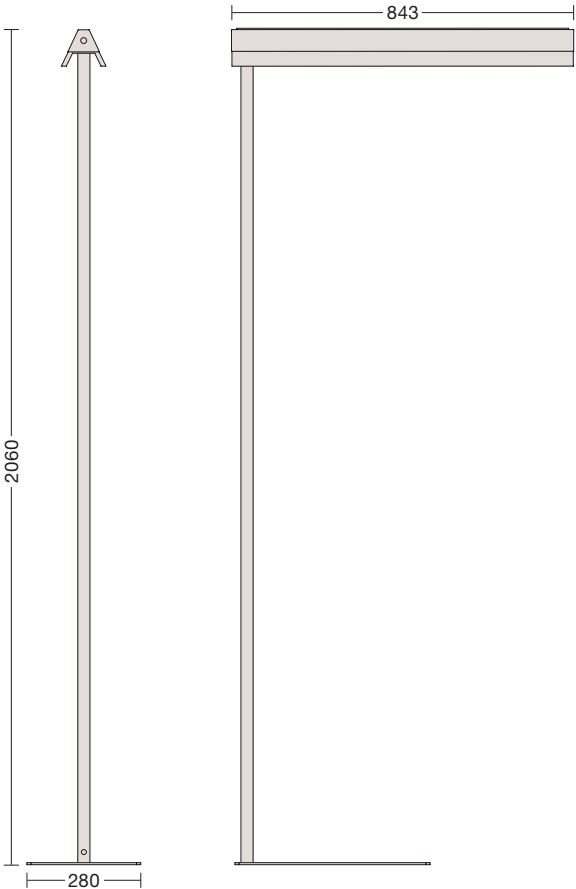
OP
Flat Opal



Type of installation



Technical drawings



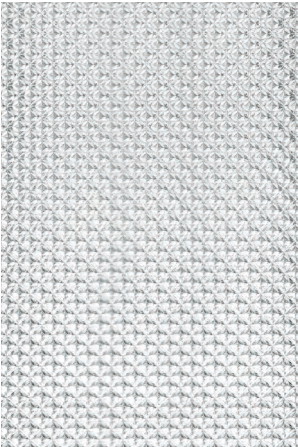
Light distribution

- Direct/Indirect

Finish colours

- Matte black
- Matte white

Screen types



SMP
Micro-prismatic
diffuser



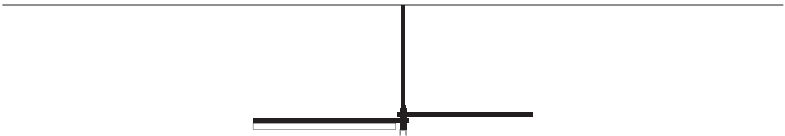
Ceiling mount system with an essential design: the three arms, two for direct lighting and one for indirect lighting, can turn perpendicularly to the support stem, to offer the best lighting according to the activity performed and the location of the furnishings. The luminaire can change

configuration and adapt to changes in the internal layout. The structure, available in two finishes, is made up of aluminium arms and steel stem. The lighting elements are equipped with LED sources and the special design of the lens minimizes blinding from the direct flow.



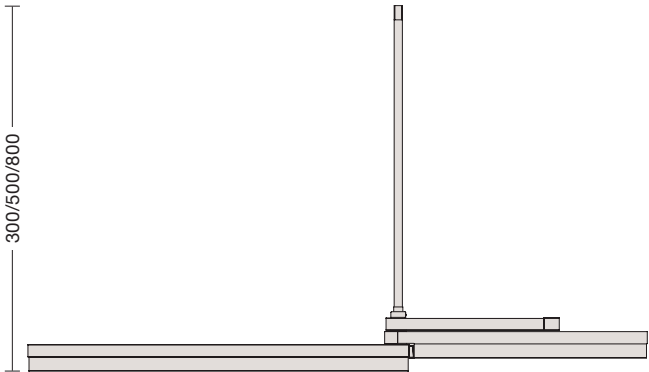
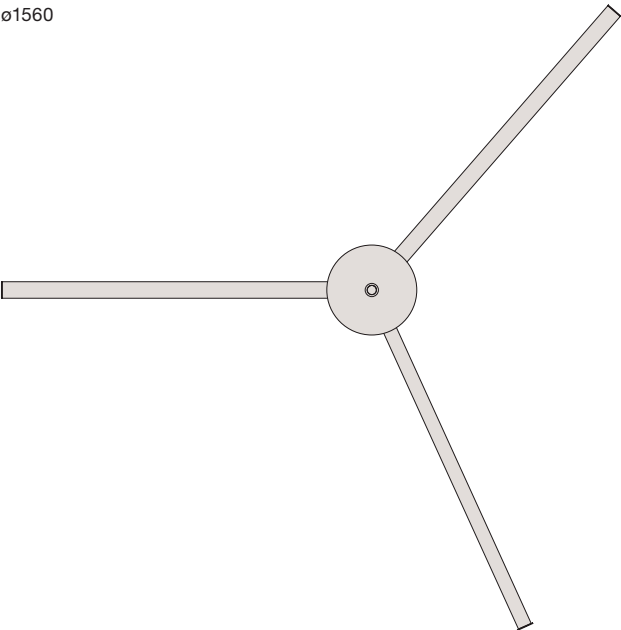


Type of installation



Technical drawings

ø1560



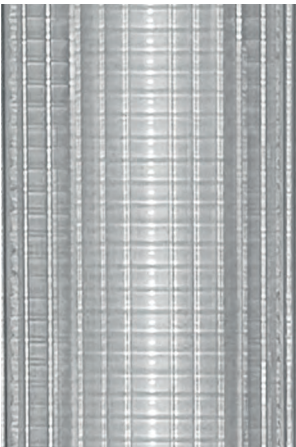
Light distribution

- Direct/Indirect

Finish colours

- Matte black
- Matte white

Screen types



Low glaring lens



The excellence of light combined with the elegance of the shape. 3F Solo is the result of the thinking behind the creation of the 3F Trittico: it is a simple, linear element that integrates discretely into environments.

An elegant, deliberately simple product enriched with technical details that become significant aesthetic characteristics. The design of the fluted lens developed by the 3F Filippi optical laboratory, ensures that the light is diffused into the space softly and without glaring: the complex shape characterised by

horizontal lines becomes a symmetry motif of the entire fixture in an interplay of surfaces that lighten the body when the fixture is lit. In the version with the prismatic screen the contrast between the smooth surface of the body and the fluted diffuser creates a dualism that enhances its technical spirit. The direct and indirect versions provide a feeling of greater space to the surrounding environment and make the product appear even more suspended in space.



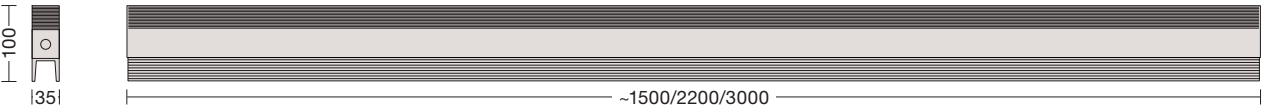


Type of installation

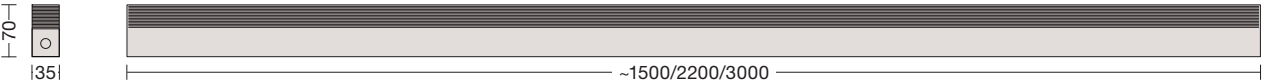


Technical drawings

3F Solo L



3F Solo SP



Light distribution

- Direct
- Direct/Indirect

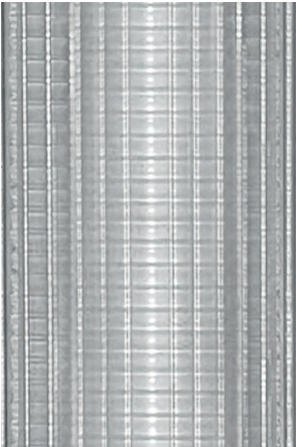
Models

- 3F Solo L
- 3F Solo SP

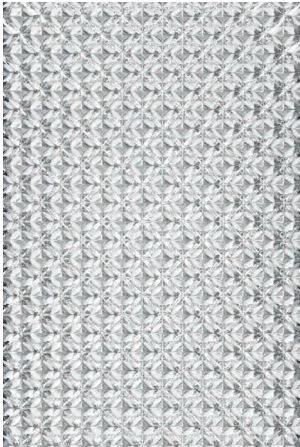
Finish colours

- Matte black
- Matte white

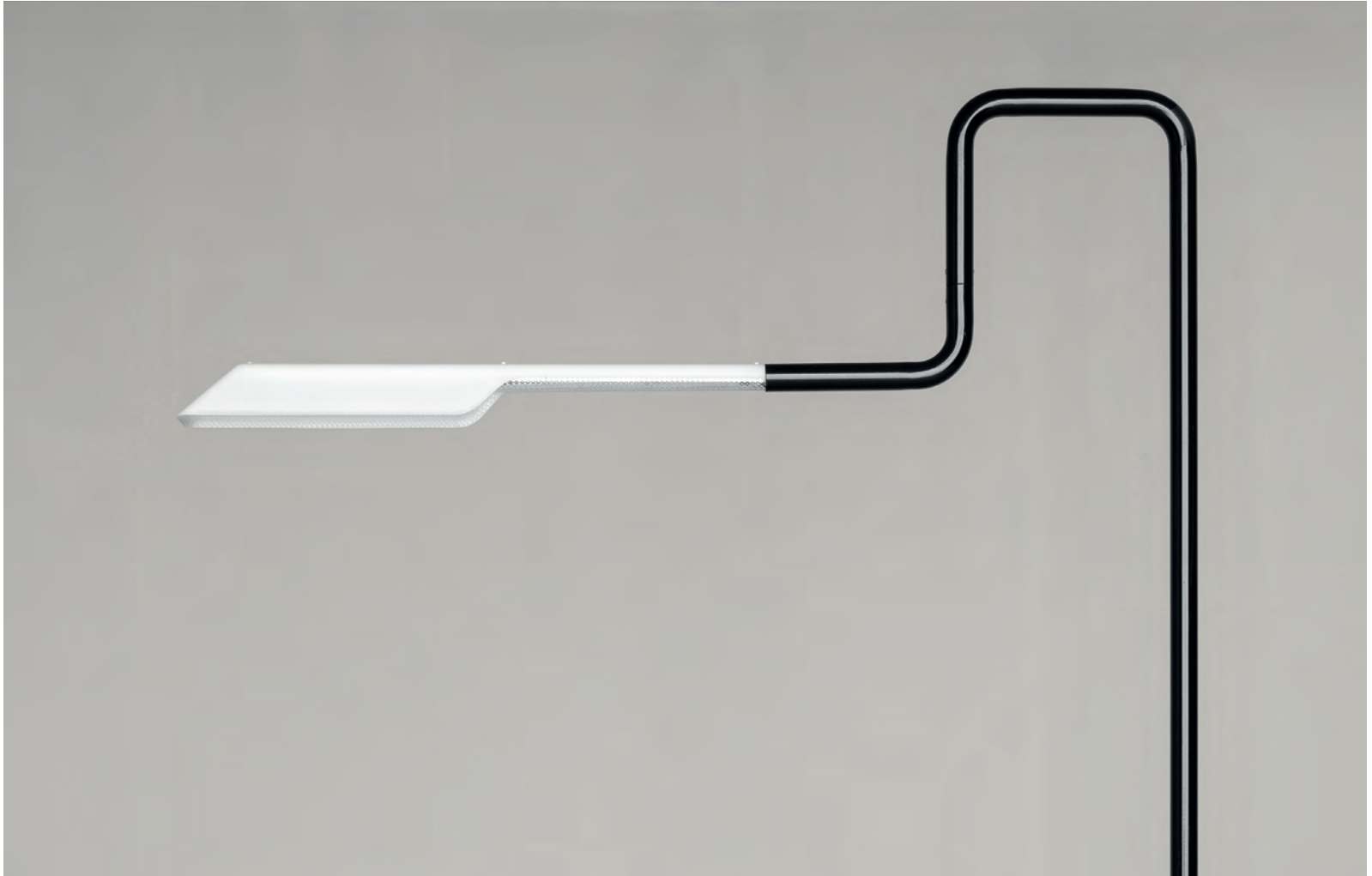
Screen types



L
Low glaring lens

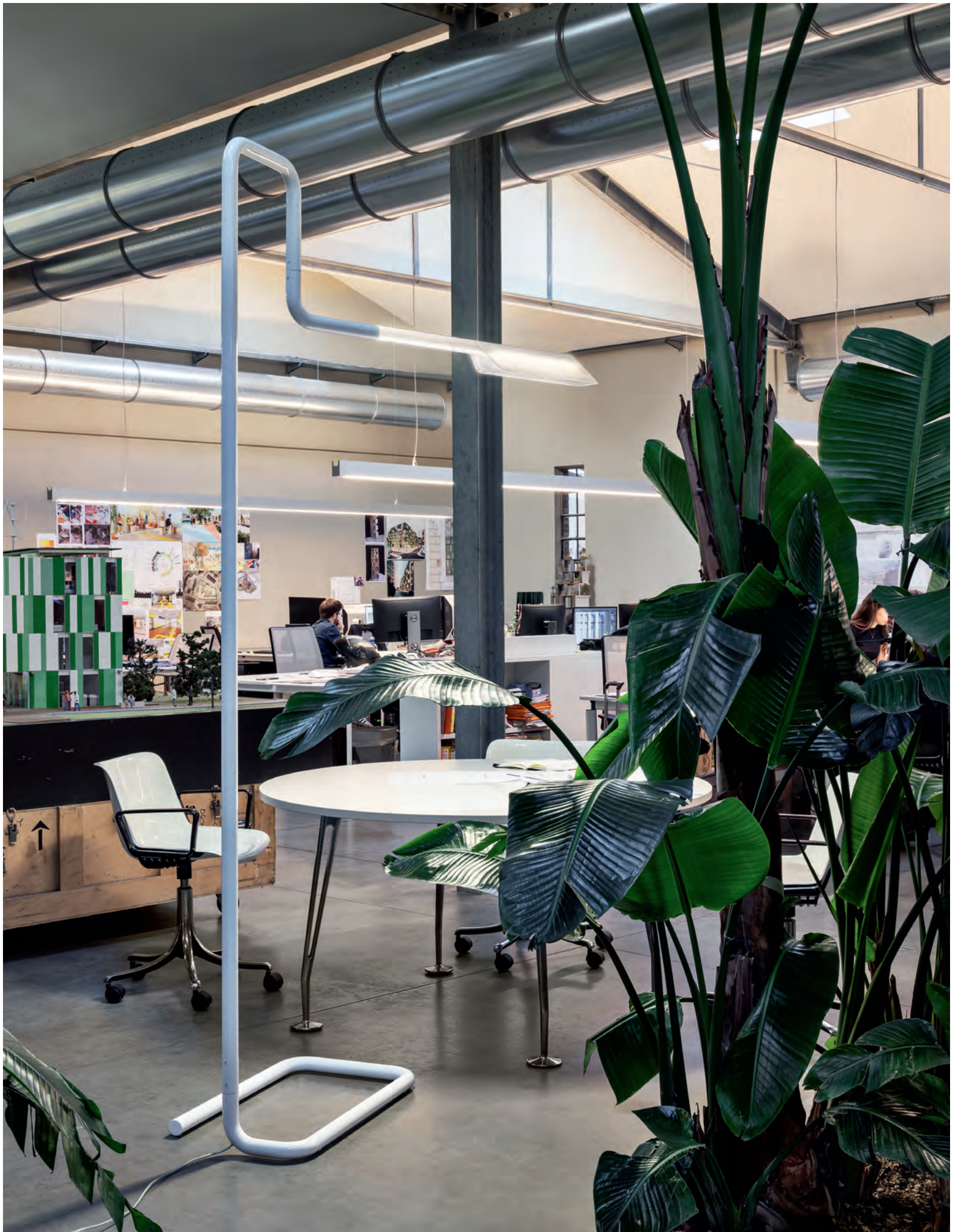


SP
Flat Prismatic

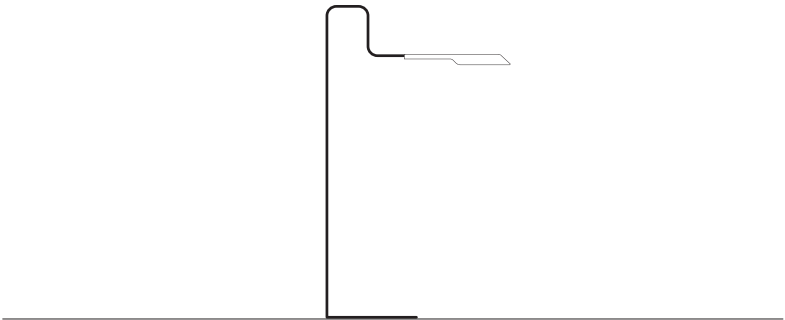


Pedestal luminaire that can be used as a single element, freely positioned in the environment or repeated in a sequence to create rhythm in architectural spaces. The upper arm can rotate 90°, moving outside the outline of the base to adapt to different furnishing configurations. The section of the structure is constant from the base to the diffuser, and the different

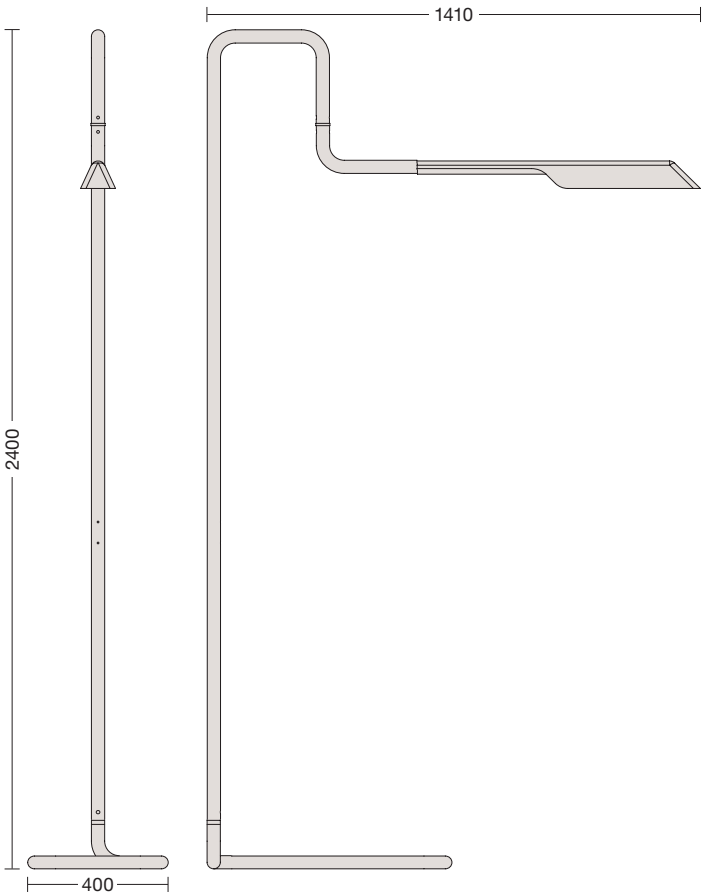
curves create a line that ends with the slender luminaire. Filoluce emits direct and indirect light, which is distributed downward through a special prismatic trapezoidal diffuser and upward through an opal element, allowing excellent visual comfort. Made of steel and available in two finishes, it is equipped with a touch control located on the vertical section.







Technical drawings



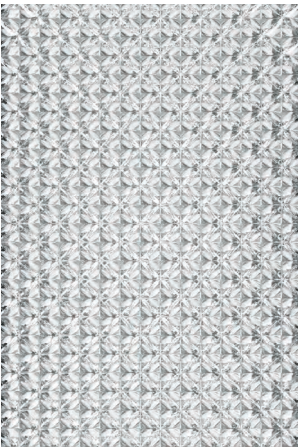
Light distribution

- Direct/Indirect

Finish colours

- Glossy Black
- Glossy White
- Graphite Grey
- Glossy Red

Screen types



SP
Flat Prismatic



OP
Flat Opal

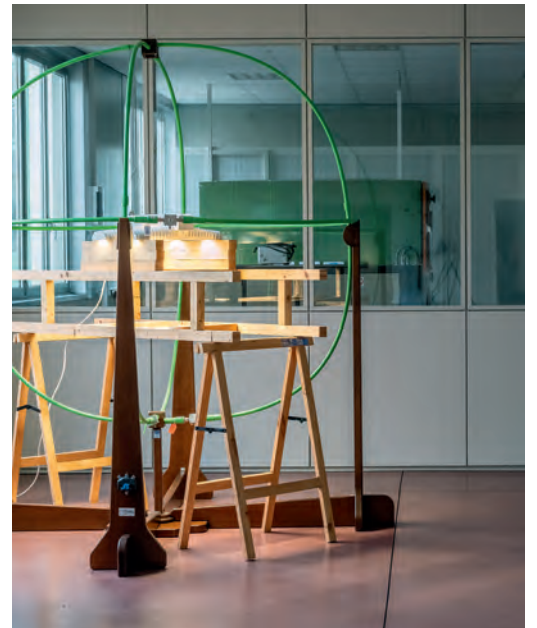
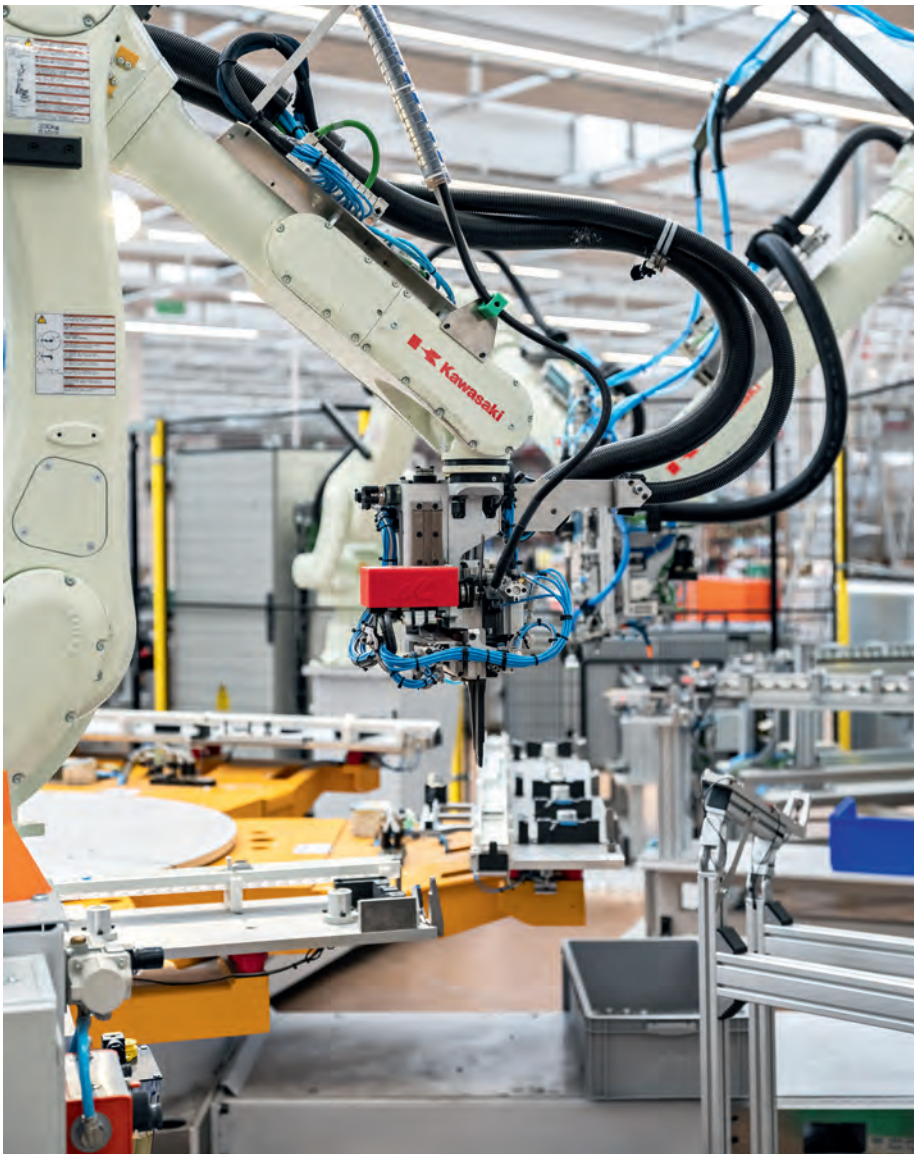
The company expertise 3F Filippi

Almost 70 years of history, 300 specialized collaborators - engaged in the company that trained them professionally -, over 60,000 square meters of production plants with state-of-the-art equipment, high technological contents, a path of constant research in fully dedicated test laboratories: among these, the Goniophotometer, a sophisticated instrumentation, which the company is one of the very few in Europe to possess, indispensable for making photometric, spectrometric and

thermal measurements, so as to be able to certify products according to the 13032 standard (the most advanced in terms of photometric calculations). 3F Filippi therefore represents a reality of international excellence in the lighting field, able to work on different scales with achievements in more than 50 countries and relations with the largest industrial groups, prestigious public bodies and institutional partners. Commercial spaces, infrastructures, production plants,

cultural assets, health buildings or buildings for training are illuminated with systems entirely designed and produced within the company: a "100% made in 3F Filippi" pursued to guarantee the absolute quality of the proposal, through a process of attention to the smallest details, which begins with the choice of raw materials to achieve the optimization of products in terms of energy saving.





The designers

3F Mirella

3F HD

3F Trittico

3F Filoluce

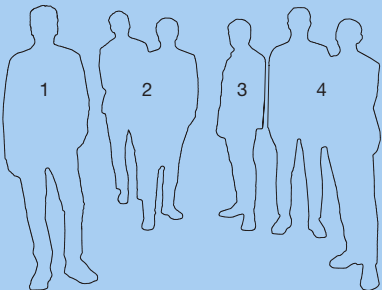
3F Solo

1
Andrea Ciotti
Active in architecture, communication, and design, he performs research at national and European architectural universities. He develops products for design-oriented companies, coordinates architectural and interior projects, and is involved in cultural initiatives for public bodies, private customers, and institutions in Italy and abroad.

2
Park Associati
Attention, intuition, and experimentation define the design culture of the architectural studio founded in Milan in 2000 by Filippo Pagliani and Michele Rossi. Projects include headquarters for major company groups, retail for prestigious international brands, office and restaurants, residential undertakings, urban regeneration and master plans.

3
Alfonso Femia / AF*DESIGN
Alfonso Femia / AF*DESIGN is the name 5+1AA changed its name to. Created by Alfonso Femia with other travel companions, since 1995, the studio has been pursuing the idea of design being a tool for dialogue to imagine spaces, architecture, and chronotopic cities. With AF*design, he develops research on the topic and collaborates with companies about the product.

4
GEZA Architettura
Founded in 1999 by Stefano Gri and Piero Zucchi, it has offices in Udine and Milan. The studio is active in all design fields: architecture, master planning, urban design, interior design, and product design, working for numerous international customers. The approach is based on the ability to merge ideas, beauty, and functionality.







Art Direction:
Andrea Ciotti

Graphic Design:
Metodo studio

Photographer:
Massimo Spada

Styling:
Daniela Maioli

Photolithography:
Studio1

Printing:
Graphicscalve



www.3f-filippi.com