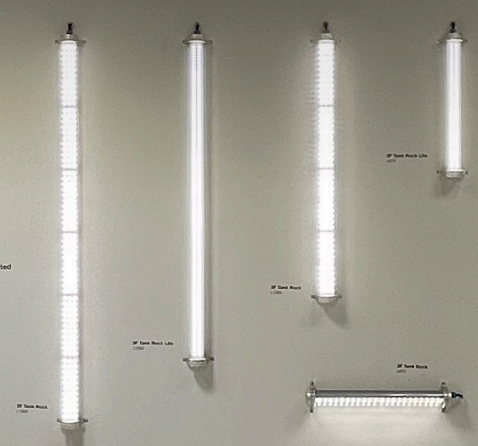


# Light + Building

3F Filippi preview products

# 3F Filippi



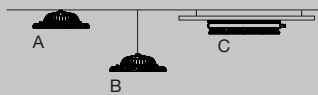
**Tank Rock**  
Unconventional distribution

Il Tank Rock è un sistema di illuminazione a LED che si distingue per la sua forma cilindrica e per la sua distribuzione di luce unica. È disponibile in diverse versioni e dimensioni, adatte a spazi di varia natura. Il sistema è progettato per offrire un'illuminazione uniforme e di alta qualità, con un'efficienza energetica superiore rispetto alle soluzioni tradizionali.





## Type of installation



- A Ceiling
- B Suspension
- C Busbar

## Dimensions (L x A x H) - Linear

- 450x200x300
- 640x200x300
- 740x200x300

## Dimensions (Ø x H) - Circle

- 462x462x250
- 420x420x250
- 530x530x250
- 626x626x250
- 610x610x250
- 610x610x250

## Versions

- 3F Rio 2L
- 3F Rio 3L
- 3F Rio 4L

## Versions

- 3F Rio 3C
- 3F Rio 4C
- 3F Rio 5C
- 3F Rio 6C
- 3F Rio 7C
- 3F Rio 8C

## Distributions

- Wide
- Medium
- Concentrated



The cutting-edge industrial product with modular light units in an innovative moon-shaped design. Available in two configurations: circular from 3 to 8 modules, as well as linear options, also in HT version for high temperatures, for unrivalled flexibility. Each module is designed for optimal performance and durability.

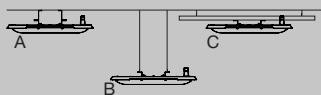
Thanks to its versatility and its luminous efficiency up to 190 lm/W, 3F Rio is suitable for a wide range of industrial applications, from manufacturing to logistics. Whether you need to maximise space with a circular layout or optimise workflow with a linear layout, 3F Rio is the ideal solution.

# 3F Rover

coming soon  
@3filippi



## Type of installation



- A Ceiling
- B Suspension
- C Busbar

## Dimensions (L x A x H)

- 600x400x100
- 600x800x100

## Distributions

- Wide
- Medium
- Concentrated

## Versions

- 3F Rover S
- 3F Rover D

The revolutionary industrial product for maximum strength and lightness.

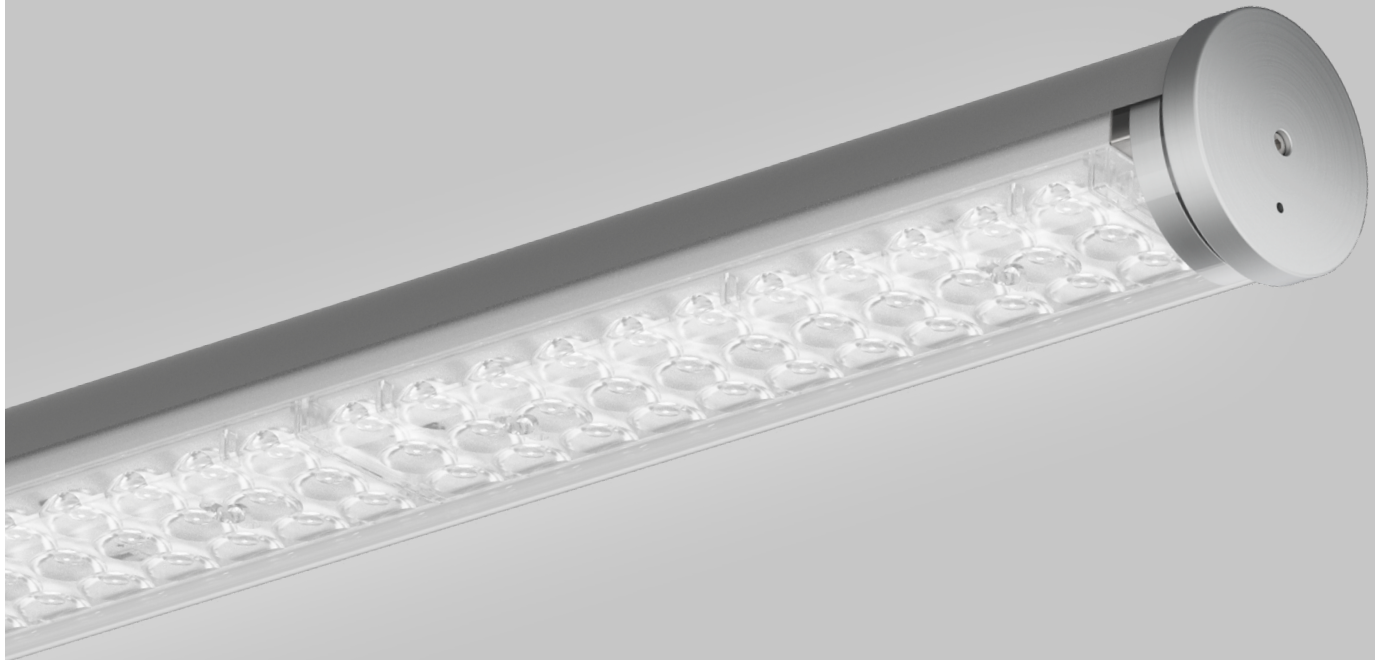
Featuring a ribbed central cover that protects the drivers, splitting two linear lenses for uniform and optimal brightness.

3F Rover offers an unrivalled combination of durability and superior performance with a luminous efficiency up to 185 lm/W. Thanks to its innovative design, it is ideal for a wide range of industrial applications and warehouses. 3F Rover stands out for its reliability and versatility.

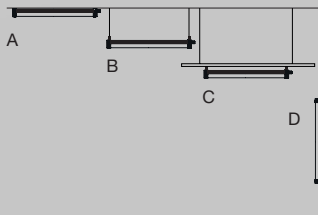


# 3F Tank

3f-filippi.com/3F-Tank  
@3ffilippi



## Type of installation



- A Ceiling
- B Suspension
- C Busbar
- D Wall

## Dimensions (L x ø)

676/1264/1558/1852x80

## Distributions

- Wide
- Medium
- UGR
- Concentrated
- Diffused (Lite)

## Versions

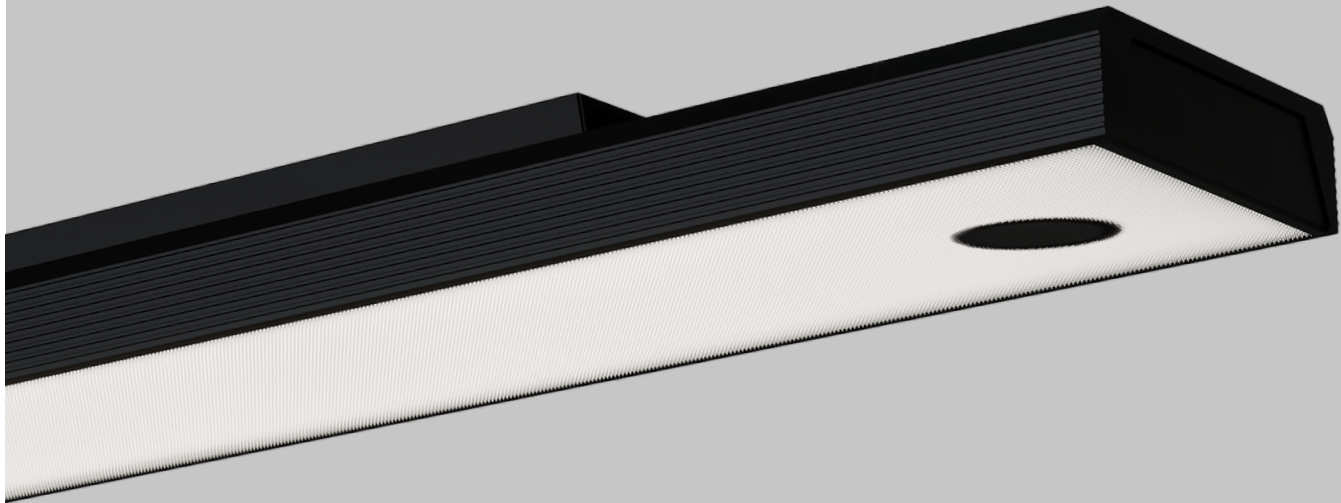
- 3F Tank Rock
- 3F Tank Ice Extreme

3F Filippi has created 3F Tank, the luminous fixture that ensures maximum safety for workers and provides quality lighting at the same time.

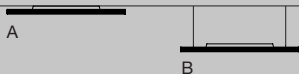
The Rock version makes it suitable for ATEX areas with the presence of gas (zone 2) and dust (zone 22).

The Ice Extreme version is suitable for cold rooms with ambient temperatures down to -30°C and humidity up to 95%.

This fixture is the definitive answer for those looking for the safest lighting solution within demanding industrial contexts thanks to its maximum mechanical resistance IK10 and IP66 rating, making it suitable for environments where equipment is intensively cleaned with high pressure water or steam.



#### Type of installation



- A Ceiling
- B Suspension

#### Dimensions (L x A x H)

- 1200/1500/1800x75x72
- 600/1200/1500/1800x150x81
- 1200/1500/1800x300x81

#### Versions

- 3F Hal 75
- 3F Hal 150
- 3F Hal 300

#### Finish colours

- Matte white
- Matte black

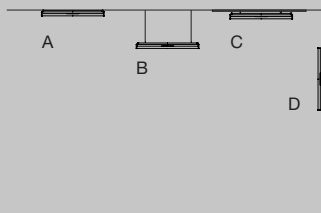
3F Hal is the new product in the 3F Architectural line, designed in collaboration with **[SCANDURRA]**.

This luminaire is designed for the working and retail world, containing different types of light: diffuse and spot and direct/indirect distribution.

Inside, hidden, a spot source creates a beam of light on the screen, a mixture of light intensities with a technological heart, a novel combination reminiscent of a theatrical backstage, Bob Wilson's scenes and Kubrick-esque mystery technology.



#### Type of installation



- A Ceiling
- B Suspension
- C Track
- D Wall

#### Dimensions (L x A x H)

- 620/1204/1506/1787x119x64

#### Versions

- Zero 3F
- Zero 3F Tunable White
- Zero 3F Track

#### Distributions

- Controlled UGR
- Asymmetric

#### Module

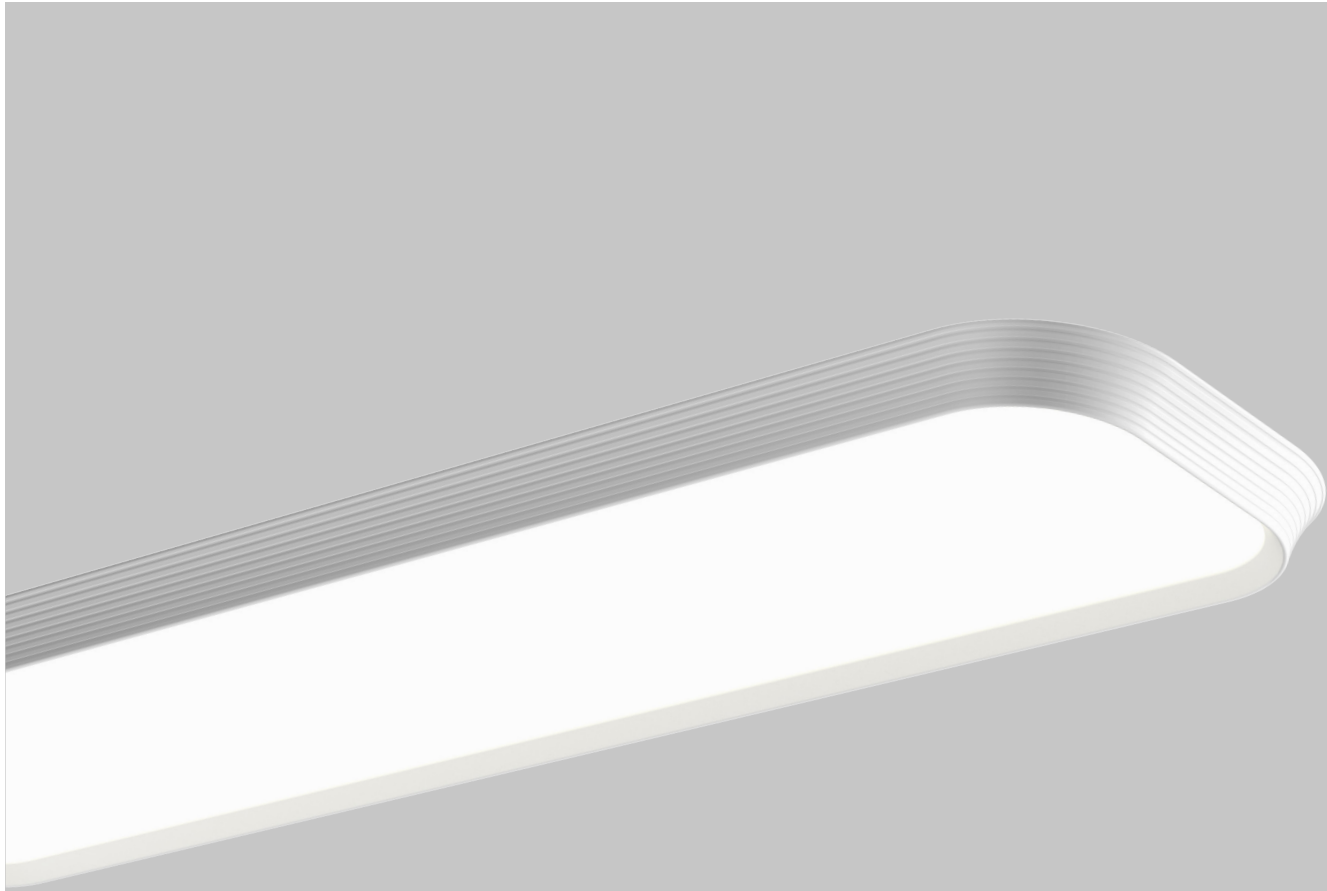
- Single
- Channel

In modern study and work spaces, the homogeneity of light is a fundamental element to reduce shadow areas and improve volume perception. Minimising the contrast between areas that are lit differently limits eye stress making the environment more comfortable.

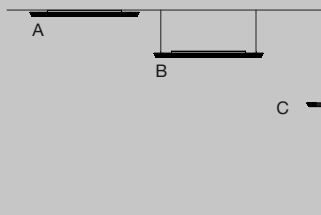
Zero 3F was designed specifically to cope with visual tasks efficiently in task-areas, thanks to an increase in the surrounding and background areas. Light is distributed widely even on the walls to limit the "cave effect" and to enhance the furnishings and information present on vertical surfaces.

# 3F Pregio

coming soon  
@3filippi



## Type of installation



- A Ceiling
- B Suspension
- C Wall

## Dimensions (L x A x H)

- ~1200/1500x315x66

## Versions

- 3F Pregio
- 3F Pregio Tunable White
- 3F Pregio Wall

## Finish colours

- Matte white
- Matte black



A combination of elegance and functionality, a new standard for comfortable lighting with direct/indirect distribution for high comfort in professional environments.

3F Pregio emits a soft, enveloping light thanks to the combination of LED and microprismatic satinised screen for soft, glare-free illumination.

Its horizontal striped structure makes it unique and distinguishable, remaining discreet and elegant in any working environment.



[/ Contacts](#)